

# Radio interference suppression filter, single-phase HLE 110-230/16



Picture shows HLE 110-230/16

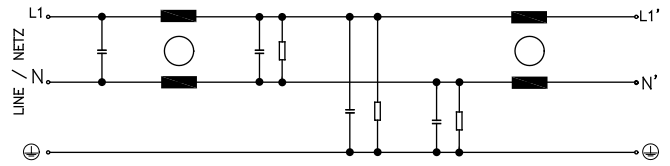
## Advantages

- For enhanced requirements
- Single-stage filter concept
- Efficient filter effect against line-bound interference emissions
- Increase in the interference immunity of the connected consumer

## Applications

Radio interference suppression filter for line-side interference suppression of single devices, frequency converters or as group interference suppression.

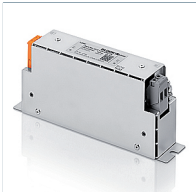
## Sample application



## Standards

Radio interference suppression filter to DIN EN 60939-2

## Approvals



## Radio interference suppression filter, single-phase HLE 110-230/16

Type		HLE 110-230/16
Electrical data	Operating data	
	Rated voltage	250 Vac
	Voltage range	0 - 250 Vac
	Rated current	16 A
	Leakage current (50 Hz)*	8.50 mA
	Rated frequency	50 - 60 Hz
	Overrating Capacity	150 %, short-time
	Environment	
	Ambient temperature max.	50 °C
	Climatic category	25/085/21 (in accordance with EN 60068-1)
Safety and protection		
Protection index	IP 20	
Type	Metal enclosure	
Safety class (prepared)	I	
Test voltage	1700 Vdc Phase/Phase, 2700 Vdc Phase/PE	
Notes		
*	Leakage current measured against the maximum permissible input voltage fluctuation in accordance with IEC 38 ±10 %	
Order numbers		
Order Number	HLE 110-230/16	

Type		HLE 110-230/16
Mechanical data	Terminal and mounting	
	Terminals phase	Screw clamp, 4 mm <sup>2</sup>
	Terminals PE	Bolt, M5
	Fixing method	Mounting lugs
	Fixing screws	M5
Measures and weights		
Weight	0.78 kg	

